



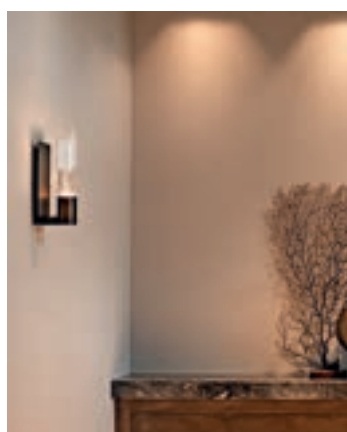
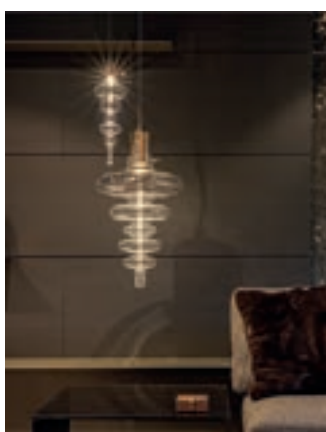
## ILFARI FAR MORE THAN JUST LIGHTING

*Exclusive lighting doesn't even need to be lit to draw attention. They decorate the loft, the kitchen or the dining area where they hang from the ceiling, or are fixed to the wall. A lighting fixture often provides a conversation starter about the interior design. ILFARI is a Dutch company, founded twenty years ago, which specializes itself in designing and crafting such fixtures.*

With collections bearing poetic names like 'Tears from Moon', 'Embrace' and 'Eye in the Sky', ILFARI's designers provide both a contemporary interpretation of classic lighting forms and the implementation of new, abstract contours. "To do so, we use the finest metals, such as pure brass and bronze, and refined glass, in a contemporary form," says owner Frank Hendriks. "In this way, we strike a chord all over the world. Our fixtures can be found in Singapore and Los Angeles as well as in London and Amsterdam."

### **BESPOKE**

The quality glass per instance is imported from Italy, where ILFARI then gets it modified as well. "We look for the best craftspeople where they are: all over Europe", says Renée Ploegmakers. As Creative Director she composes the collections, as well as designing luminaires. "Customers can choose from our collection, or have certain designs customised to their liking. Everything is crafted by hand and can therefore be modified to the size, number of



elements or finish that suits the final interior design. Give ILFARI a high loft, and we will make it even more impressive than it already was, with one of our fixtures. We don't do this all alone, of course. We like to work with architects and designers to create a perfectly fitting luminaire. And we do that in a renovation or new construction project by all means, because you don't choose items of this quality and appearance only afterwards, you integrate them into the plans for the interior."

#### IMAGINE MORE

Everything is designed and crafted with passion and with an eye on long-term enjoyment, both when the fixture is lit and when it is not. "It is difficult to capture the appearance in photos," says Frank Hendriks. "We therefore like to welcome people to our Inspiration Centre in Beek en Donk (NL), where we can show what ILFARI is capable of. After all, the effects of the light the fixture emits are not the only ones it produces. The luminaire is an artistic object in its own right, attracting the attention and admiration of visitors, aesthetically elevating the space in which it hangs to an even higher level, thus highlighting the plus points of interior design. In short, an ILFARI lighting object is more than just a fixture. Partly for this reason, we use the slogan 'imagine more':

the luminaire puts the occupants' imagination to work. With an ordinary fixture they are bathed in light, with a conversation piece from ILFARI they are bathed in beauty."

---

## ILFARI

Polbeemd 3 | E. [info@ilfari.com](mailto:info@ilfari.com)  
5741 TP Beek en Donk | T. +31 (0)492 - 700209

# ILFARI

For more information: [www.ilfari.com](http://www.ilfari.com)

---